

**Anchor nut**

nom-Ø [mm]	Article-no.	A/F [mm]	L [mm]	Ø [mm]	weight [kg]
12	12 T 2002	22	25	—	0,05
16	16 T 2002	32	40	—	0,2
20	20 T 2002	36	45	—	0,3
25	25 T 2002	41	50	—	0,4
28	28 T 2002	46	55	—	0,35
32	32 T 2002	55	60	—	0,85
40	40 T 2002	65	70	—	1,3
50	50 T 2002	80	85	—	2,2
63,5	63 T 2002	100	115	108	4,6

material: S355, C45

**Lock nut - long**

nom-Ø [mm]	Article-no.	A/F [mm]	L [mm]	Ø [mm]	weight [kg]
12	12 T 2003	19	20	—	0,05
16	16 T 2003	32	30	—	0,15
20	20 T 2003	32	40	—	0,15
25	25 T 2003	41	40	—	0,3
28	28 T 2003	41	45	—	0,3
32	32 T 2003	50	50	—	0,5
40	40 T 2003	60	65	—	0,95
50	50 T 2003	80	80	—	2,25
63,5	63 T 2003	90	110	102	4,0

material: S 355, C45

**Lock nut, long – cast iron**

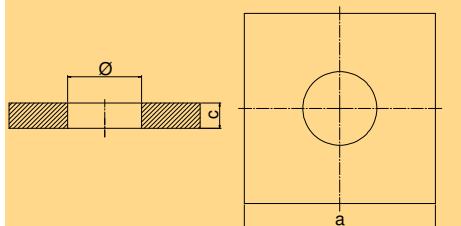
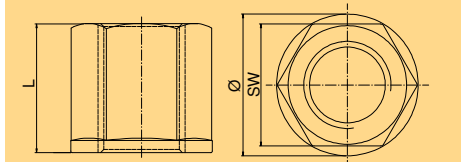
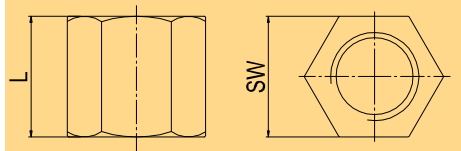
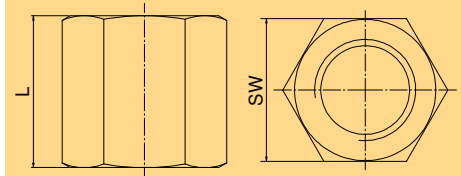
nom-Ø [mm]	article-no.	A/F [mm]	L [mm]	Ø [mm]	weight [kg]
16	16 T 2003 G	32	30	38	0,15
20	20 T 2003 G	32	40	38	0,15
25	25 T 2003 G	41	40	50	0,25
28	28 T 2003 G	41	45	50	0,3
32	32 T 2003 G	50	50	60	0,45
40	40 T 2003 G	60	65	70	0,85
50	50 T 2003 G	80	80	93	2,0

material: cast iron EN GJS-400-15  
cast iron EN GJS-500-7

**Anchor plate**

nom-Ø [mm]	article-no.	a [mm]	c [mm]	Ø [mm]	weight [kg]
12	12 T 2008	40	6	16	0,05
16	16 T 2008	50	8	20	0,15
20	20 T 2008	60	10	25	0,25
25	25 T 2008	70	12	30	0,4
28	28 T 2008	85	14	33	0,7
32	32 T 2008	100	15	38	1,0
40	40 T 2008	120	17	47	1,7
50	50 T 2008	150	20	58	3,1

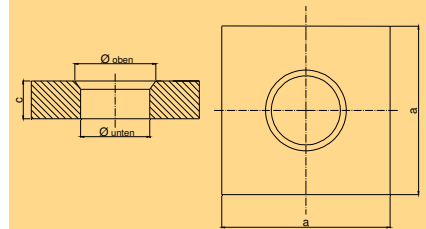
material: S 235



**Anchor plate with cone**

nom-Ø [mm]	article-no.	a [mm]	c [mm]	Ø <sub>oben</sub> (mm)	Ø <sub>unten</sub> (mm)	weight [kg]
32	32 T 2011	140	30	60	51	4,0
40	40 T 2011	160	40	76	64	7,2
50	50 T 2011	200	45	96	82	12,0
63,5	63 T 2011	245	50	121	103	21,0

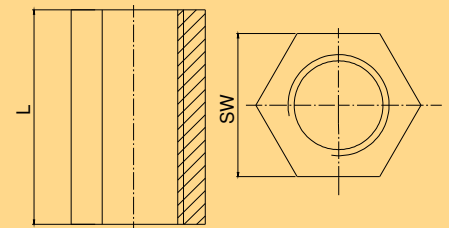
material: S 235



**Anchor nut - long**

nom-Ø [mm]	article-no.	A/F [mm]	L [mm]	weight [kg]
12	12 T 2024	22	35	0,08
16	16 T 2024	32	50	0,25
20	20 T 2024	32	65	0,4
25	25 T 2024	41	75	0,55
28	28 T 2024	41	85	0,6
32	32 T 2024	50	90	0,9
40	40 T 2024	60	100	1,9
50	50 T 2024	80	120	3,4

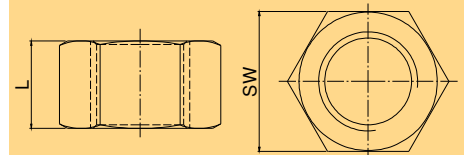
material: S 355, C45



**Lock nut - short**

nom-Ø [mm]	article-no.	A/F [mm]	L [mm]	Ø [mm]	weight [kg]
12	12 T 2040	19	13	—	0,02
16	16 T 2040	32	15	—	0,05
20	20 T 2040	32	20	—	0,1
25	25 T 2040	41	20	—	0,15
28	28 T 2040	41	25	—	0,15
32	32 T 2040	50	30	—	0,3
40	40 T 2040	60	35	—	0,5
50	50 T 2040	80	50	—	1,2
63,5	63 T 2040	90	75	102	2,2

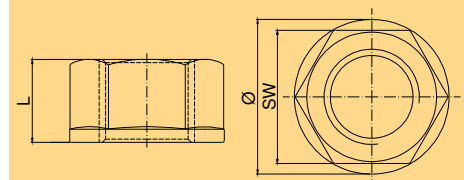
material: S 355, C45



**Lock nut, short – cast iron**

nom-Ø [mm]	article-no.	A/F [mm]	L [mm]	Ø [mm]	weight [kg]
16	16 T 2040 G	32	15	—	0,05
20	20 T 2040 G	32	20	—	0,1
25	25 T 2040 G	41	20	—	0,15
28	28 T 2040 G	41	25	—	0,15
32	32 T 2040 G	50	30	60	0,3
40	40 T 2040 G	60	35	70	0,4
50	50 T 2040 G	80	50	93	1,2
63,5	63 T 2040 G	100	75	116	3,0

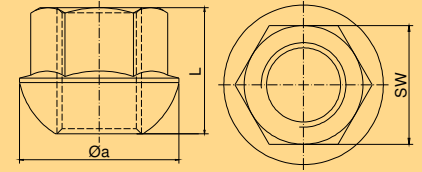
material: cast iron EN GJS-500-7



**Domed nut**

nom-Ø [mm]	article-no.	A/F [mm]	L [mm]	Ø <sub>a</sub> [mm]	weight [kg]
16	16 T 2044	-	-	-	-
20	20 T 2044	36	41	49	0,25
25	25 T 2044	41	45	55	0,35
28	28 T 2044	41	54	62	0,45
32	32 T 2044	46	57	70	0,6
40	40 T 2044	60	70	88	1,5
50	50 T 2044	80	85	107	2,8
63,5	63 T 2044	100	115	144	6,2

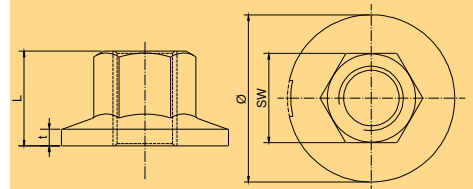
material: cast iron GS-42CrMo 4 (Ø16 – 32)  
cast iron EN GJS-500-7 (Ø40 – 63,5)



**Anchor piece**

nom-Ø [mm]	article-no.	A/F [mm]	L [mm]	Ø [mm]	t [mm]	weight [kg]
16	16 T 2073 G	30	35	50	6	0,2
20	20 T 2073 G	36	40	60	8	0,3
25	25 T 2073 G	41	45	70	9	0,5
28	28 T 2073 G	46	50	85	9	0,75
32	32 T 2073 G	50	60	96	10	1,0
40	40 T 2073 G	60	70	120	12	2,0
50	50 T 2073 G	80	85	150	15	3,8
63,5	63 T 2073 G	100	115	250	20	12,0

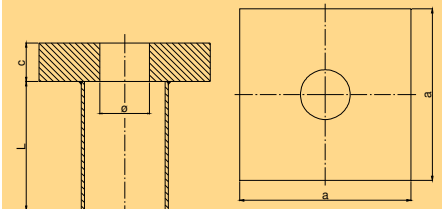
material: cast iron EN GJS-400-15  
cast iron EN GJS-500-7



**Anchor plate without a cone for temporary bar anchors**

nom-Ø [mm]	article-no.	a [mm]	c [mm]	Ø [mm]	L (mm)	weight [kg]
32	32 T 2100	140	30	38	150	5,1
40	40 T 2100	160	40	47	150	8,3
50	50 T 2100	200	45	58	150	14,5
63,5	63 T 2100	245	50	72	150	23,8

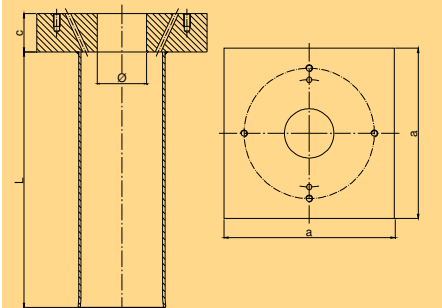
material: S 235



**Anchor plate with steel tube for GEWI-DCP anchors**

nom-Ø [mm]	article-no.	a [mm]	c [mm]	Ø [mm]	L (mm)	weight [kg]
32	32 T 2110	140	30	38	300	5,8
40	40 T 2110	160	40	47	300	9,1
50	50 T 2110	200	45	58	300	15,1
63,5	63 T 2110	245	50	72	300	25,6

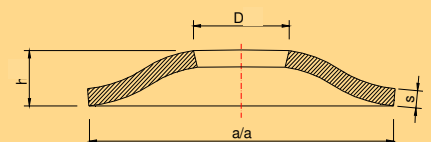
material: S 235



**Domed plate**

nom-Ø [mm]	article-no.	a [mm]	D [mm]	h [mm]	s [mm]	weight [kg]
16	16 T 2182	120	28	21	5	0,6
20	20 T 2182	120	40	21	8	0,9
25	25 T 2182	150	43	25	10	1,8
28	28 T 2182	150	47	25	10	1,7
32	32 T 2182	200	52	35	12	3,6

material: S 235



**Anchor plate GT**

nom- $\emptyset$ [mm]	article-no.	a [mm]	c [mm]	$\emptyset$ [mm]	weight [kg]
16	16 T 2139	80	10	20	0,6
20	20 T 2139	90	12	25	0,7
25	25 T 2139	110	15	30	1,35
28	28 T 2139	120	20	33	2,1
32	32 T 2139	120	30	37	3,2
40	40 T 2139	150	40	46	6,5
50	50 T 2139	190	45	58	11,8
63,5	63 T 2139	245	50	72	22,0

material: S 235

**Anchor nut – flanged (cast)**

nom- $\emptyset$ [mm]	article-no.	A/F [mm]	L [mm]	$\emptyset$ [mm]	weight [kg]
16	16 T 2163 G	30	35	42	0,17
20	20 T 2163 G	36	40	47	0,2
25	25 T 2163 G	41	45	52	0,3
28	28 T 2163 G	46	50	58	0,35
32	32 T 2163 G	55	60	70	0,85
40	40 T 2163 G	65	70	85	1,4
50	50 T 2163 G	80	85	100	2,3
63,5	63 T 2163 G	100	115	125	4,6

material: EN GJS-500-7

**Double anchor piece - cast**

nom- $\emptyset$ [mm]	article-no.	A/F [mm]	L [mm]	$\emptyset$ [mm]	t [mm]	weight [kg]
63,5	63 T 2179 G	100	240	150	20	9,6

material: iron cast EN GJS-500-7

**Anchor piece (cast)**

nom- $\emptyset$ [mm]	article-no.	A/F [mm]	L [mm]	$\emptyset$ [mm]	t [mm]	weight [kg]
63,5	63 T 2183 G	100	125	350	20	23,0

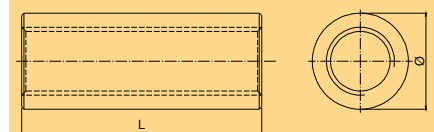
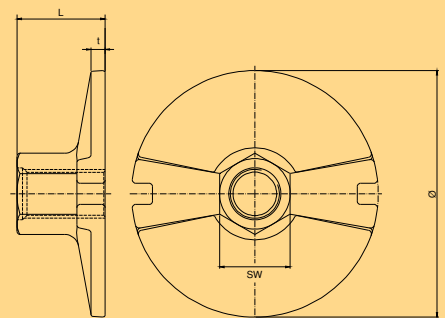
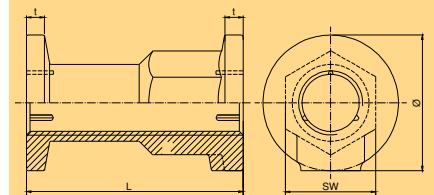
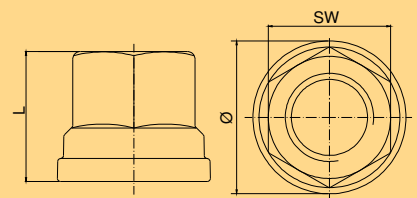
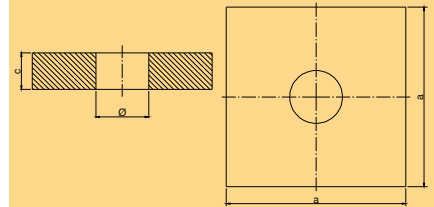
material: iron cast EN GJS-500-7

**Coupler**

nom- $\emptyset$ [mm]	article-no.	$\emptyset$ [mm]	L [mm]	weight [kg]
12	12 T 3003	22	60	0,1
16	16 T 3003 (GS)	32	90	0,4
20	20 T 3003 (GS)	36	105	0,55
25	25 T 3003 (GS)	40	115	0,65
28	28 T 3003 (GS)	45	125	1,0
32	32 T 3003 (GS)	52	140	1,4
40	40 T 3003 (GS)	65	160	2,5
50	50 T 3003 (GS)	80	200	4,9
63,5	63 T 3003 (GS)	102	260	10,3

material: S 355

(GS) cast steel: GS 42CrMo 4



**Contact coupler**

nom-Ø [mm]	article-no.	Ø [mm]	L [mm]	weight [kg]
32	32 T 3006	45	90	0,5
40	40 T 3006	52	120	0,85
50	50 T 3006	65	160	1,75
63,5	63 T 3006	90	200	5,1

material: S355

**Coupler - long (A/F)**

nom-Ø [mm]	article-no.	A/F [mm]	L [mm]	weight [kg]
16	16 T 3010	32	120	0,6
20	20 T 3010	32	140	0,6
25	25 T 3010	41	160	1,2
28	28 T 3010	41	180	1,2
32	32 T 3010	50	180	2,0
40	40 T 3010	60	210	3,1
50	50 T 3010	80	240	6,8

material: S 355, C45

**Reduction coupler, long (A/F)**

nom-Ø [mm]	article-no.	A/F [mm]	L [mm]	L <sub>1</sub> [mm]	L <sub>2</sub> [mm]	weight [kg]
12 / 16	12/16 T 3012	32	110	35	55	0,3
16 / 20	16/20 T 3012	32	140	55	65	0,75
20 / 25	20/25 T 3012	41	175	65	75	1,4
25 / 28	25/28 T 3012	41	220	75	85	1,5
28 / 32	28/32 T 3012	50	230	85	90	2,5

material: S 355, C45

**Change over coupler**

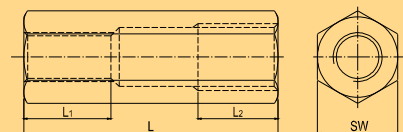
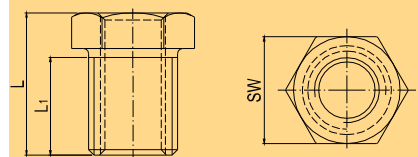
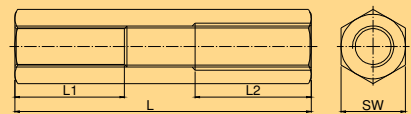
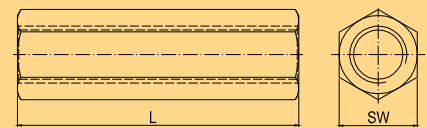
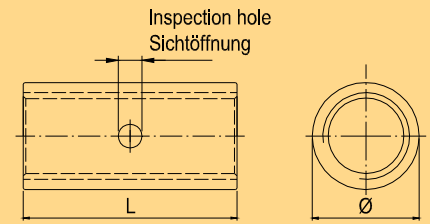
nom-Ø [mm]	article-no.	A/F [mm]	L [mm]	L <sub>1</sub> [mm]	weight [kg]
16	16 T 3013	36	50	30	0,2
20	20 T 3013	41	60	40	0,35
25	25 T 3013	46	65	45	0,3
28	28 T 3013	50	70	50	0,5
32	32 T 3013	60	80	55	0,5
40	40 T 3013	80	95	65	1,5
50	50 T 3013	100	105	75	3,1
63,5	63 T 3013	100	150	115	4,3

material: S 355, C45

**Tensioning coupler**

nom-Ø [mm]	article-no.	A/F [mm]	L [mm]	L <sub>1</sub> [mm]	L <sub>2</sub> [mm]	weight [kg]
16	16 T 3014	36	125	45	40	0,75
20	20 T 3014	41	145	50	45	1,2
25	25 T 3014	46	160	55	50	1,5
28	28 T 3014	50	175	60	55	1,6
32	32 T 3014	60	190	65	60	2,5
40	40 T 3014	80	225	75	70	6,5
50	50 T 3014	100	270	90	90	12,0
63,5	63 T 3014	100	360	120	120	22,9

material: S 355, C45



**Weld-on piece**

nom-Ø [mm]	article-no.	Ø [mm]	L [mm]	Ø <sub>1</sub> [mm]	weight [kg]
16	16 T 3022	40	45	30	0,35
20	20 T 3022	45	50	31	0,45
25	25 T 3022	50	55	38	0,5
28	28 T 3022	55	60	38	0,55
32	32 T 3022	60	65	42	0,8
40	40 T 3022	80	80	54	1,7
50	50 T 3022	90	90	64	2,4

material: S 355

**Weld-on piece - long,(A/F)**

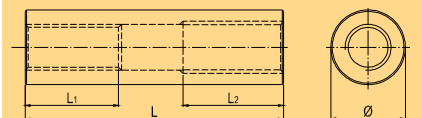
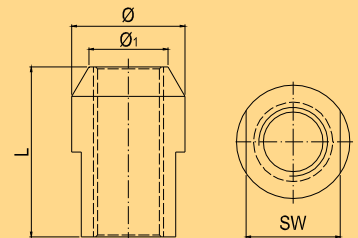
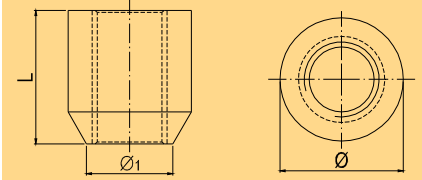
nom-Ø [mm]	article-no.	A/F [mm]	L [mm]	Ø [mm]	Ø <sub>1</sub> [mm]	weight [kg]
16	16 T 3026	32	55	40	30	0,4
20	20 T 3026	32	65	45	31	0,5
25	25 T 3026	41	75	50	38	0,75
28	28 T 3026	41	85	55	38	0,95
32	32 T 3026	50	90	60	42	1,2
40	40 T 3026	60	100	80	54	2,3
50	50 T 3026	80	120	90	64	3,5

material: S 355

**Reduction coupler**

nom-Ø [mm]	article-no.	Ø [mm]	L [mm]	L <sub>1</sub> [mm]	L <sub>2</sub> [mm]	weight [kg]
12 / 16	12/16 T 3102	32	100	30	45	0,5
16 / 20	16/20 T 3102	36	130	45	50	0,7
20 / 25	20/25 T 3102	40	150	50	55	1,0
25 / 28	25/28 T 3102	45	170	55	65	1,4
28 / 32	28/32 T 3102	52	180	65	70	1,7
32 / 40	32/40 T 3102	65	210	70	80	3,8
40 / 50	40/50 T 3102	80	240	80	100	6,5
50 / 63,5	50/63 T 3102	102	260	100	120	10,2

material: S 355, C45



**Please note:**

This brochure serves basic information purposes only. Technical data and information provided herein shall be considered non-binding and may be subject to change without notice. We do not assume any liability for losses or damages attributed to the use of this technical data and any improper use of our products. Should you require further information on particular products, please do not hesitate to contact us.



**DYWIDAG-SYSTEMS International GmbH**  
 Germanenstrasse 8  
 86343 Koenigsbrunn  
 Germany

☎ - Phone: +49 (0) 8231 – 9607 – 0  
 ☎ - Fax: +49 (0) 8231 – 9607 – 40  
 🌐 - Web: [www.dywidag-systems.com](http://www.dywidag-systems.com)